

Geographic Information System (GIS) Tool for Creating Contours of Spatial Data

By: Omar Valenzuela, MS Student

Advisors:

Prof. Néstor J. Rodríguez

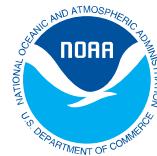
Prof. José A. Borges

WALS AIP

Human Computer Interaction Group

University of Puerto Rico at Mayaguez (UPRM)

March 14, 2007



Problem

There is a lack of tools on the web that can help researchers deal with images of geographical areas of their particular interest. They usually need to rely on previous knowledge of the image such as coordinates or where the images are stored. This task could be greatly improved if the researcher is able to delineate a region of interest and used it as reference to search images that are associated to that region. Tools providing such functionality are almost none existent on the Internet. In order to have this functionality, one needs to rely on a commercial applications that do not run on the web.



WALSAIP



Solution

- A clean and organized User Interface built from the ground up.
- Easy search of images that correspond to a sector or region of interest.
- Fast access to stored contours via a database query.
- Top-of-the-line technology.
Via a **Web-delivered** tool like some of the big companies are doing today: All of the Google website Apps, Yahoo, and now Adobe:
http://news.com.com/Adobe+sees+its+future+on+the+Web/2008-1012_3-6164143.html
- Can be deployed on any network for remote or local access.
- Multiplatform.
- Open Source code will allow the application to be enhanced further in the future and researchers will have the option of adding the tool as part of their own projects.



WALSAIP



Demo: Contour's Tool

(slide 1 of 2)

The screenshot displays the Walsaip contours_tool interface. It features a central map area with a yellow polygon overlaid. To the left, there are three panels: 'Current Contour View' with a list of contours, 'Contours' with a list of locations, and 'Available Images' with a list of images. Below these panels is a 'Polygons' table. At the bottom of the map area are 'Save', 'New', and 'Close' buttons. A green arrow points from the 'Save' button to the 'Dynamic Information Display' text box.

Latitude	Longitude
214321.51351	214321.51351
214321.51351	214321.51351
214321.51351	214321.51351
214321.51351	214321.51351

Map area where researchers can browse the map.

Tools (drag, create, add, delete, edit, zoom control).

Save, New Contour.

Dynamic Information Display.

<http://136.145.116.243/demo/>



Demo: Contour's Tool

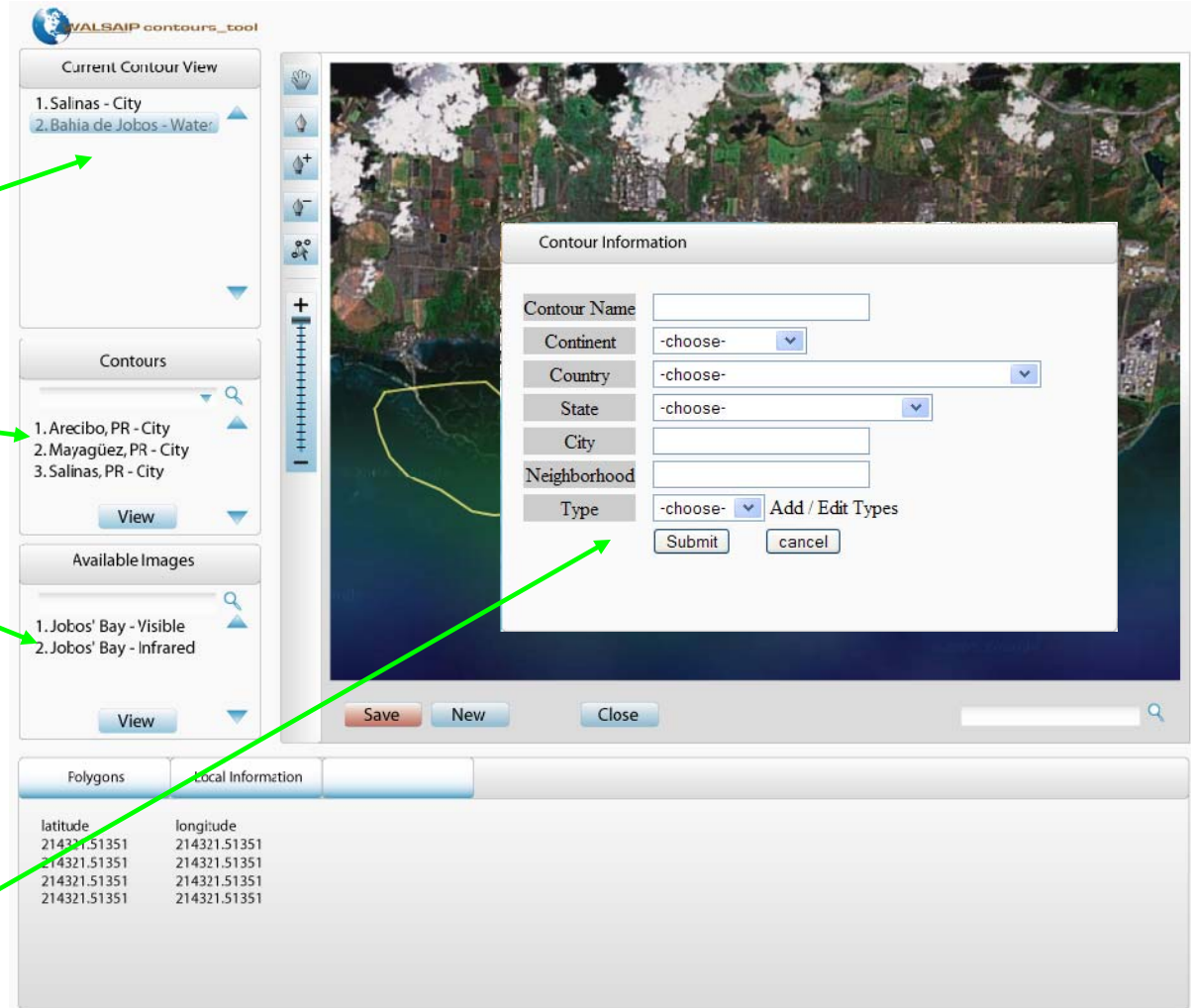
(slide 2 of 2)

Contours currently at work.

Locally available contours.

Available background images.

Contour Information gathering controlled by the Save option.



<http://136.145.116.243/demo/>



WALSAP

