



John Sanabria – PhD Student
PDC Group, ECE Department,
Email: john.sanabria@ece.uprm.edu

Prof. Wilson Rivera – Advisor
University of Puerto Rico,
Mayagüez Campus

1 Problem Formulation

The Wide Area Large Scale Automated Information Processing (WALS-AIP) project aims at developing an infrastructure for the treatment of signal-based information arriving from physical sensors in a wide-area, large scale environment. The proposed model accentuates a distributed space-time processing format. This approach demands efficient data and resource management techniques.

2 Proposed Solution

We have deployed the prototype of a grid-service based system to access and manipulate data from a sensor network: a grid portal interface provides transparent access to end-users; raw data from sensors are sent to a data server via wireless communication; GridFTP is used to improve data transport from the data server to a grid infrastructure; data exchange between server and the Grid testbed is authenticated using Grid Security Infrastructure (GSI); and finally a replication strategy based on the information dispersal algorithm (IDA) is incorporate into the tool to manage the distributed storage of the data.

3 Theoretical Framework

Let $F = b_1, b_2, b_3, \dots$ be a file, where $0 \leq b_i \leq 65535$. Each b_i is an element of the finite field Z_p .

In order to disperse F , a set of n vectors $a_1, a_2, a_3, \dots, a_n \in E$, where $E = GF(2^B)$ is chosen, each of length m , and linearly independent. $A_{n \times m}$ is a matrix whose i th is a_i

The file is divided into sequences of length m ($b_1, b_2, b_3, \dots, b_m$)

Then,

$$A_{n \times m} \begin{bmatrix} b_1 \\ \vdots \\ b_m \end{bmatrix} = \begin{bmatrix} c_1 \\ \vdots \\ c_n \end{bmatrix}$$

Each resulting element c_i is stored in a separate block of file.

To recover the first m elements of F the first element from each different block is needed.

The whole file is obtained mapping sequences of m elements using the inverse of $B_{m \times m}$

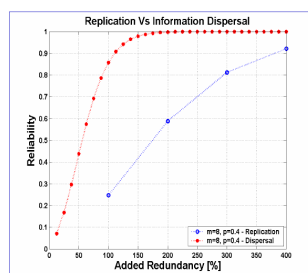
$$B_{m \times m}^{-1} \begin{bmatrix} c_1 \\ \vdots \\ c_m \end{bmatrix} = \begin{bmatrix} b_1 \\ \vdots \\ b_m \end{bmatrix}$$

$A_{n \times m}$ is Vandermonde matrix, therefore any sub-matrix of it, is invertible.

Finally, a non-reducible polynomial must be chosen. The polynomial of degree B over $GF(2^B)$, when $B = 16$ is:

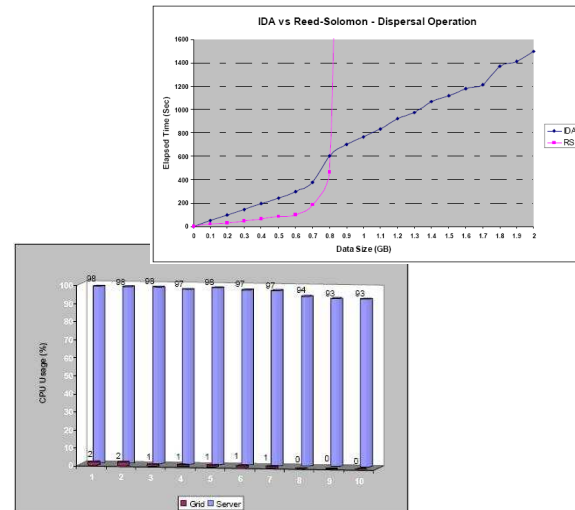
$$p(x) = x^{16} + x^{12} + x^3 + x^1$$

4 Experimental Results



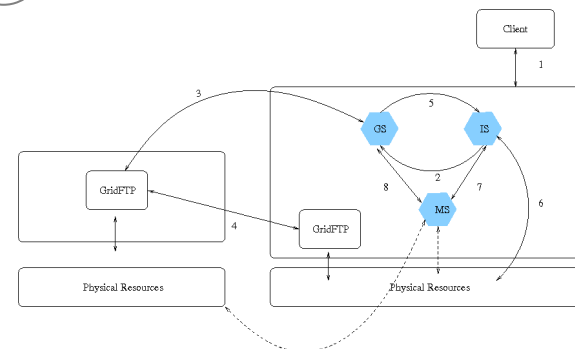
Standard Replication versus IDA

Reed Solomon versus IDA



Percentage of CPU usage

5 IDA Service Deployment



6 Conclusions

- The proposed redundancy scheme and its subsequent deployment as a grid service improves reliability.
- That work is considered as an initial proof of concept for a more complex project related to the design and implementation of adaptive resource allocation and migration.

7 References

- Rabin, M. O., "Efficient dispersal of information for security, load balancing, and fault tolerance", *Journal ACM*. 36, 2 (Apr. 1989), 335-348.
- Bestavros, A., "SETH: A VLSI chip for the real-time information dispersal and retrieval for security and fault tolerance", In *Proceedings of ICPP'90, The 1990 International Conference on Parallel Processing*, Chicago, Illinois, August 1990.
- Plank, J. S., "A tutorial on Reed-Solomon coding for fault-tolerance in RAID-like systems", *Software-Practice and Experience (SPE)*, 27(9):995-1012, Sept. 1997. Correction in James S. Plank and Ying Ding, Technical Report UT-CS-03-504, U. Tennessee, 2003.
- National Climatic Data Center, "Data documentation for DSI-6500 NEXRAD Level II", *National Climatic Data Center*, Asheville N.C., April 11, 2005.